

We're Connecting Cheshire  
www.connectingcheshire.org.uk

Autumn 2017

## Connecting Cheshire secures £7.25m to extend broadband roll-out

The investment – to be implemented over the next three years – is the fourth phase of the 'Connecting Cheshire' project and will target rural areas in Cheshire and Warrington, where broadband speeds remain low and where it has not been commercially viable to invest previously.

Called 'Digital 2020', the project will focus on reaching premises in rural broadband black spots, a digital business support package to enable small businesses to exploit digital technologies such as e-commerce, cloud computing and a broadband connection voucher scheme for businesses.

Funding will come mainly from the European Regional Development Fund (ERDF) and government sources, as well as from Connecting Cheshire and businesses.

To date, the Connecting Cheshire project has reached more than 97,000 premises with faster speeds and has switched-on more than 600 new roadside fibre broadband cabinets. The project has also been successful in driving take-up of the faster speeds by homes and businesses and will soon reach 50 per cent, one of the highest in the country.

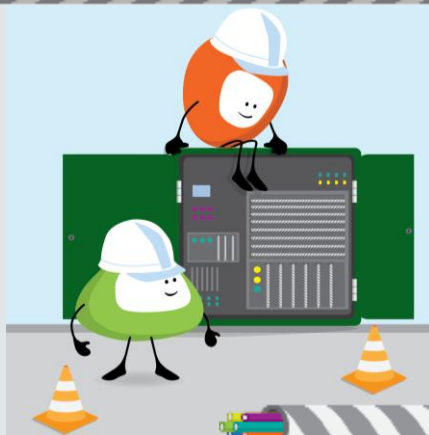
The process of selecting an infrastructure partner for Digital 2020 is already underway and the scope of coverage will be confirmed once the procurement process is completed. It is hoped that the programme will start its roll-out in early 2018.



### Latest areas to join the fibre fast lane:

Broxton 2, Bunbury 6, Chelford 5, Chester Central 143, Cholmondeley 2, 3 & 4, Christleton 5, Comberbach 2, Haslington 35, Huxley 1, 2 & 3, Knutsford 25, Mobberley 10 & 11, Smallwood 3, Wybunbury 1

For advice on how to check availability and switch to fibre see [here](#).



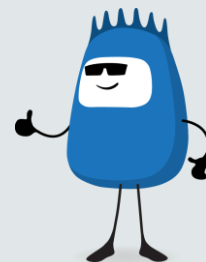
# Summer switch-on events

Around 380 households and businesses in Cholmondeley now have access to high-speed fibre broadband.

Local MP, Antoinette Sandbach joined residents and local Wrenbury Councillor Stan Davies, to celebrate the latest fibre cabinet switch-on in Bickerton Road. *(Photo – top right)*



Four new roadside fibre cabinets have been installed by Openreach, across the area in total. Antoinette Sandbach, MP for Eddisbury, said: "Residents in rural areas often feel that they are missing out on superfast so it is great to see this expansion of superfast in Cholmondeley. I look forward to BT reaching other rural areas in the constituency."



## Better Broadband Scheme

A subsidised broadband installation is available if you cannot access an affordable broadband service with a speed of at least 2 Mb per second. However this scheme is scheduled to close at the end of December 2017, although the government may extend the scheme this is yet to be confirmed. Therefore, if you are considering this option complete your request for a voucher as soon as possible, [To apply for a subsidy, please click here.](#)

## Superfast facts...

- There are approximately 204 million emails sent per minute and 70% of all the emails sent are spam.
- It is expected that around 40 billion gadgets are going to be connected to the internet by 2020.
- Want to know how popular Facebook is? Almost half of the world's population are internet users and nearly half of them are using Facebook.

Source: <https://fossbytes.com/10-interesting-facts-internet-really-need-know/>

## Future Funding

The success of the Government's superfast broadband rollout programme means that a total of up to £645m is to be made available over the coming years to help take superfast broadband to the most remote and hard to reach places in the UK, it was announced by Minister for Digital Matt Hancock on 9<sup>th</sup> September 2017.

Together with other planned delivery, it is estimated that this could see more than 900,000 extra UK homes and businesses gain access to superfast speeds after the end of this year, taking superfast coverage to 98 per cent of the nation over the next few years.

A clause in the Government's contracts requires suppliers to recycle funding when people take up superfast connections installed as part of the programme. BT has set aside £465 million to extend coverage over the full lifetime of the contracts – up from £292m in December last year. Combined with project efficiencies of £180m resulting from successful management and delivery of the programme, there will be up to £645 million available for local authorities to re-invest and take superfast speeds to those homes and businesses not already covered by existing plans. Of this, over £200m has already been committed to projects to extend superfast broadband. We await confirmation of the share for Connecting Cheshire. [Full announcement](#)



**European Union**  
European Regional  
Development Fund



Department  
for Culture  
Media & Sport